



FOOTBALL
2015-2016



INSPIRED BY EUROPEAN TOP TEAMS



A FLASH
OF BRILLIANCE

DESIGNED TO SHINE



COMPETING AT THE HIGHEST LEVEL



A FLASH OF BRILLIANCE

INNOVATE YOUR GAME



PRECISION



ENERGY



SASH

ENERGETIC DESIGN
EXCEPTIONAL PERFORMANCE

CONTENTS

6
MATCHDAY

42
TRAINING

66
LIFESTYLE

72
WOMEN'S

76
REFEREE

80
EQUIPMENT

88
SIZE & CARE

90
NAMES & NUMBERS

MATCHDAY

CHALLENGE JERSEY



8

ENERGY III JERSEY



10

PRECISION III JERSEY



12

STRIKER III JERSEY



20

VICTORY II JERSEY



22

GOLEIRO JERSEY



34

SASH JERSEY



14

TROPHY II JERSEY



16

STRIPED DIVISION JERSEY



18

PARK DERBY JERSEY



24

PARK V JERSEY



26

PARK GOALIE II JERSEY



36

CHALLENGE

ID: NEYMAR JR



MAX GRAPHIC
SHORT

VAPOR III
SOCK



Backview



011 Black/Volt/
(Volt)



156 White/
Black/(Black)



463 Royal Blue/
White/(White)



547 Court Purple/
Volt/(Volt)



657 University Red/
Black/(White)



715 Volt/Black/
(Black)

CHALLENGE JERSEY



Designed to shine.

- Neckline: stand up collar with 2-button placket.
- Warp-knit mesh back panel enhances ventilation.
- Contrasting mesh fabric on shoulder and side panel.
- Fabric: Dri-FIT 100% polyester.

Life cycle: 01 April 2015 - 19 March 2018

644659	Men's	Short Sleeve		S	M	L	XL	2XL
645494	Men's	Long Sleeve		S	M	L	XL	2XL
645915	Youth	Short Sleeve	XS	S	M	L	XL	
645914	Youth	Long Sleeve	XS	S	M	L	XL	

ENERGY III

ID: RONALDO



LASER II
WOVEN SHORT

TEAM STADIUM II
OTC SOCK

NEW



Backview



010 Black/
(White)



156 White/
(Black)



302 Pine Green/
(White)



463 Royal Blue/
(White)



657 University Red/
(White)



815 Safety Orange/
(Black)

ENERGY III JERSEY



Unstoppable on the pitch.

- Neckline: V-neck collar with non-restrictive fit.
- Full mesh back panel.
- Jacquard fabric creates a subtle checkered pattern with lightweight soft feel.
- Fabric: Dri-FIT 100% polyester.

Life cycle: 01 April 2015 - 19 March 2017

645491	Men's	Short Sleeve		S	M	L	XL	2XL
645490	Men's	Long Sleeve		S	M	L	XL	2XL
645916	Youth	Short Sleeve	XS	S	M	L	XL	
645911	Youth	Long Sleeve	XS	S	M	L	XL	

PRECISION III

ID: TURAN



LASER II
WOVEN SHORT

TEAM STADIUM II
OTC SOCK

NEW



Backview



016 Black/University Red/
(White)



302 Pine Green/
White/(Black)



410 Midnight Navy/
Laser Blue/(White)



657 University Red/
White/(Royal Blue)



739 University Gold/
Royal Blue/(White)

PRECISION III JERSEY



Traditional fit, exceptional performance.

- Neckline: crew neck for non-restrictive fit.
- Sublimated checkered design with gradient execution.
- Dri-FIT fabric keeps you comfortable and cool.
- Fabric: Dri-FIT 100% polyester.

Life cycle: 01 April 2015 - 19 March 2017

644626	Men's	Short Sleeve		S	M	L	XL	2XL
644629	Men's	Long Sleeve		S	M	L	XL	2XL
645918	Youth	Short Sleeve	XS	S	M	L	XL	
645910	Youth	Long Sleeve	XS	S	M	L	XL	

SASH

ID: MATUIDI



LASER II
WOVEN SHORT

CLASSIC II
SOCK

NEW



Backview



105 White/
University Red/(White)



313 Action Green/
Pine Green/(White)



410 Midnight Navy/
White/(Midnight Navy)



463 Royal Blue/
White/(Royal Blue)



657 University Red/Midnight
Navy/(White)



739 University Gold/Black/
(University Gold)

SASH JERSEY



A fresh take on a classic design.

- Neckline: crew neck with non-restrictive fit.
- Gradient “sash” graphic is sublimated on front panel.
- Dri-FIT fabric keeps you dry and comfortable.
- Fabric: Dri-FIT 100% polyester.

Life cycle: 01 April 2015 - 19 March 2018

645497	Men's	Short Sleeve		S	M	L	XL	2XL
645493	Men's	Long Sleeve		S	M	L	XL	2XL
645920	Youth	Short Sleeve	XS	S	M	L	XL	
645913	Youth	Long Sleeve	XS	S	M	L	XL	

TROPHY II

ID: STROOTMAN



LASER II
WOVEN SHORT

CLASSIC II
SOCK



Backview

010 Black/Black/White/
(White)



100 White/White/Black/
(Black)



463 Royal Blue/
Royal Blue/White/(White)



617 University Red/White/
University Red/(White)



739 University Gold/Black/
University Gold/(Black)



815 Safety Orange/Black/
Safety Orange/(Black)

TROPHY II JERSEY



Master the pitch, any pitch.

- Neckline: Rib V-neck with overlap.
- Lightweight sweat management.
- Mesh back panel.
- Fabric: Dri-FIT 100% polyester.

Life cycle: 01 April 2015 - 19 March 2017

588406	Men's	Short Sleeve		S	M	L	XL	2XL
588407	Men's	Long Sleeve		S	M	L	XL	2XL
588428	Youth	Short Sleeve	XS	S	M	L	XL	
588429	Youth	Long Sleeve	XS	S	M	L	XL	

STRIPED DIVISION

ID: ERIKSEN



DRI-FIT II
KNIT SHORT

TEAM STADIUM II
OTC SOCK



Backview

010 Black/White/
Black*/(University Red)

014 Black/Royal Blue/
Black*/(White)



016 Black/University
Red/Black*/(White)

017 Black/University
Gold/Black*/(White)

060 Anthracite/Black/
Anthracite*/(White)

412 University Blue/White/
University Blue*/(Black)



463 Royal Blue/
White/Royal Blue*/
(Black)

657 University Red/
White/University Red*/
(Black)

658 University Red/
University Gold/
University Red*/(Black)

* colour of solid back panel

STRIPED DIVISION JERSEY



Authenticate your game.

- Neckline: rib V-neck with overlap.
- Mesh back panel for enhanced ventilation.
- Cross-dyed stripes.
- Fabric: Dri-FIT 100% polyester.

Life cycle: 01 April 2015 - 19 March 2016

588411	Men's	Short Sleeve		S	M	L	XL	2XL
588412	Men's	Long Sleeve		S	M	L	XL	2XL
588433	Youth	Short Sleeve	XS	S	M	L	XL	
588434	Youth	Long Sleeve	XS	S	M	L	XL	

STRIKER III

ID: SERGIO RAMOS



DRI-FIT II
KNIT SHORT

CLASSIC II SOCK



Backview

010 Black/
Voltage Cherry/
(Voltage Cherry)

100 White/
University Red/
(University Red)

101 White/
Royal Blue/
(Royal Blue)



102 White/
Black/
(Black)

302 Pine Green/
White/
(White)

410 Midnight Navy/
University Gold/
(University Gold)

412 University Blue/
White/
(White)

463 Royal Blue/
White/
(White)



545 Court Purple/
White/
(White)

657 University Red/
White/
(White)

739 University Gold/
Black/
(Black)

803 Total Orange/
Black/
(Black)

STRIKER III JERSEY



Ready for battle.

- Neckline: Mitered V-neck.
- Right contrasting arm details.
- Vertical contrasting cut and sew panel with flat seam construction for logo application.
- Fabric: Dri-FIT 100% polyester.

Life cycle: 01 April 2015 - 19 March 2016

520460	Men's	Short Sleeve		S	M	L	XL	2XL
520461	Men's	Long Sleeve		S	M	L	XL	2XL
520565	Youth	Short Sleeve	XS	S	M	L	XL	
520566	Youth	Long Sleeve	XS	S	M	L	XL	

VICTORY II

ID: LEWANDOWSKI



DRI-FIT II
KNIT SHORT

HOOPS II
SOCK



Backview

100 White/Midnight Navy/(White)

301 Pine Green/White/(Pine Green)



302 Electric Green/Black/(White)

411/410* Midnight Navy/University Red/(White)

412 University Blue/White/(University Blue)

463 Royal Blue/White/(Royal Blue)



657 University Red/Black/(White)

658 University Red/White/(University Red)

815 Safety Orange/Black/(White)

* Men's 411 - Youth 410

VICTORY JERSEY



Transform, perform.

- Neckline: Round rib crew neck. • Cut and sew chevron design.
- Mesh back panel. • Fabric: Dri-FIT 100% polyester.

Life cycle: 01 April 2015 - 19 March 2017

588408	Men's	Short Sleeve		S	M	L	XL	2XL
588409	Men's	Long Sleeve		S	M	L	XL	2XL
588430	Youth	Short Sleeve	XS	S	M	L	XL	
588431	Youth	Long Sleeve	XS	S	M	L	XL	

PARK DERBY

ID: THIAGO SILVA



PARK KNIT
SHORT

PARK IV
SOCK



Backview

060 Anthracite/
Black/Anthracite/
(White)



100 White/
Black/White/
(Black)

106 White/
University Red/White/
(University Red)

412 University Blue/
Midnight Navy/White/
(Midnight Navy)

463 Royal Blue/
White/Royal Blue/
(White)



467 Royal Blue/
University Gold/
Royal Blue/White)

677 Team Red/
University Blue/
Team Red/White)

692 Solar Red/
Black/Black/
(White)

PARK DERBY JERSEY



Classic design, endless winning.

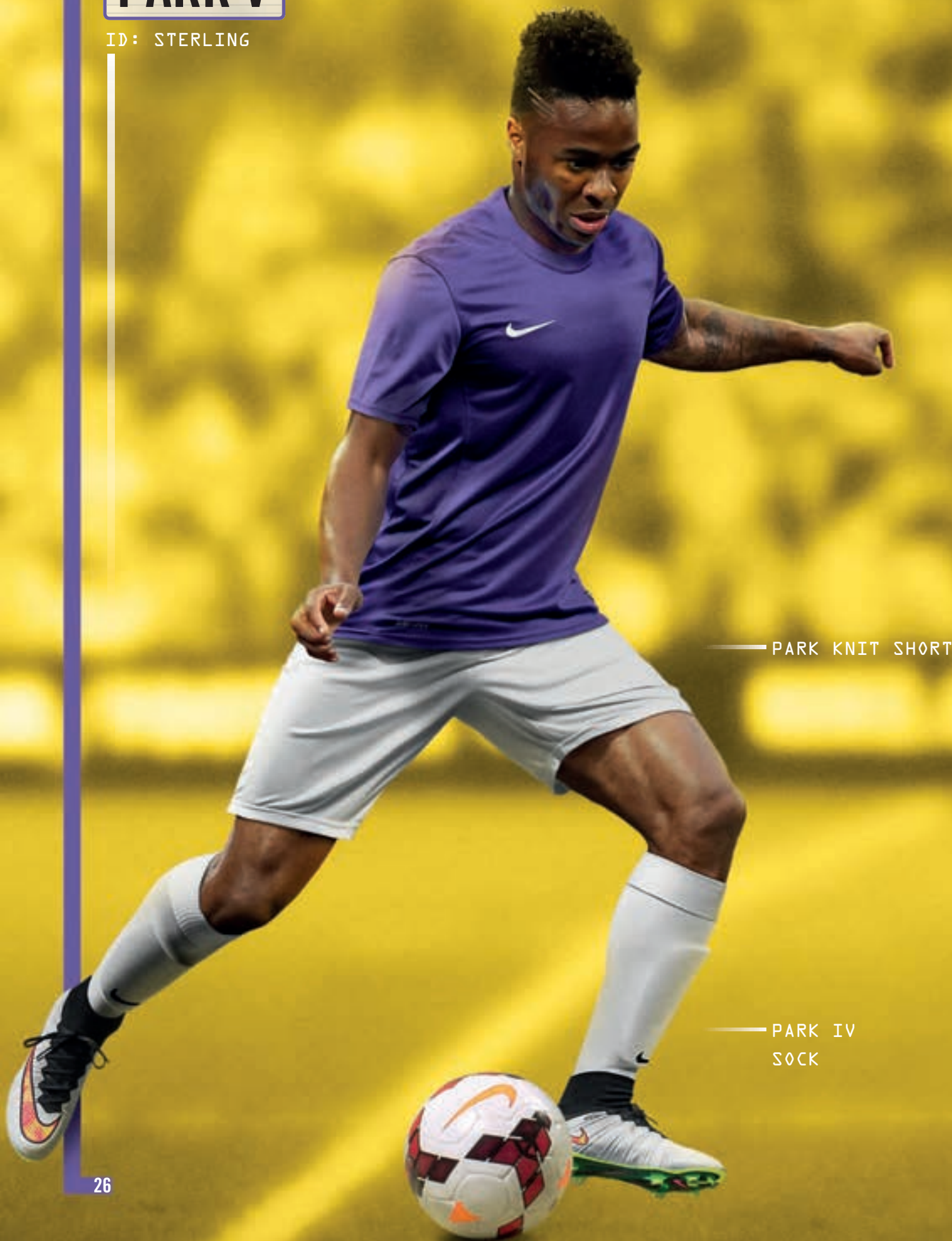
- Neckline: Rib V-neck with overlap.
- Lightweight sweat management.
- Cut and sew panel with flat seam construction.
- Fabric: Dri-FIT 100% polyester.

Life cycle: 01 April 2015 - 19 March 2018

588413	Men's	Short Sleeve		S	M	L	XL	2XL
588414	Men's	Long Sleeve		S	M	L	XL	2XL
588435	Youth	Short Sleeve	XS	S	M	L	XL	
588436	Youth	Long Sleeve	XS	S	M	L	XL	

PARK V

ID: STERLING



PARK KNIT SHORT

PARK IV
SOCK



PARK V JERSEY



Master the fundamentals.

- Constructed rib crew-neck. • Lightweight warp knit mesh side panels.
- Fabric: Dri-FIT 100% polyester.

Life cycle: 01 April 2015 - 19 March 2016

448209	Men's	Short Sleeve		S	M	L	XL	2XL
448212	Men's	Long Sleeve		S	M	L	XL	2XL
448254	Youth	Short Sleeve	XS	S	M	L	XL	
448256	Youth	Long Sleeve	XS	S	M	L	XL	



MAX GRAPHIC SHORT

Life cycle: 01 April 2015 - 19 March 2018

Graphic style with non-stop performance.

- Embossed gradient stripe graphic with contrast side panels.
- Elastic waistband with interior drawcord.
- Fabric: Dri-FIT 100% polyester.

* White (156) with brief.

645495	Men's	Without brief		XS	S	M	L	XL	2XL
645924	Youth	Without brief	XS	S	M	L	XL		



LASER II WOVEN SHORT

Life cycle: 01 April 2015 - 19 March 2016

The Nike Laser II woven short with Dri-FIT technology is perfect for gameday.

- Lightweight design.
- Mesh back enhances ventilation.
- Elastic waistband with interior drawcord.
- Fabric: Dri-FIT 100% polyester.

* White (100 & 101) with brief.

588415	Men's	Without brief		XS	S	M	L	XL	2XL
588437	Youth	Without brief	XS	S	M	L	XL		



DRI-FIT II KNIT SHORT

Life cycle: 01 April 2015 - 19 March 2016

A lightweight short with insert contrast panel and back hem.

- Mesh waistband and yoke at back side.
- Elastic waist with interior drawcord.
- Fabric: Dri-FIT 100% polyester.

520471	Men's	With brief		S	M	L	XL	2XL
520472	Men's	Without brief		S	M	L	XL	2XL
520576	Youth	With brief	XS	S	M	L	XL	
520577	Youth	Without brief	XS	S	M	L	XL	



PARK KNIT SHORT

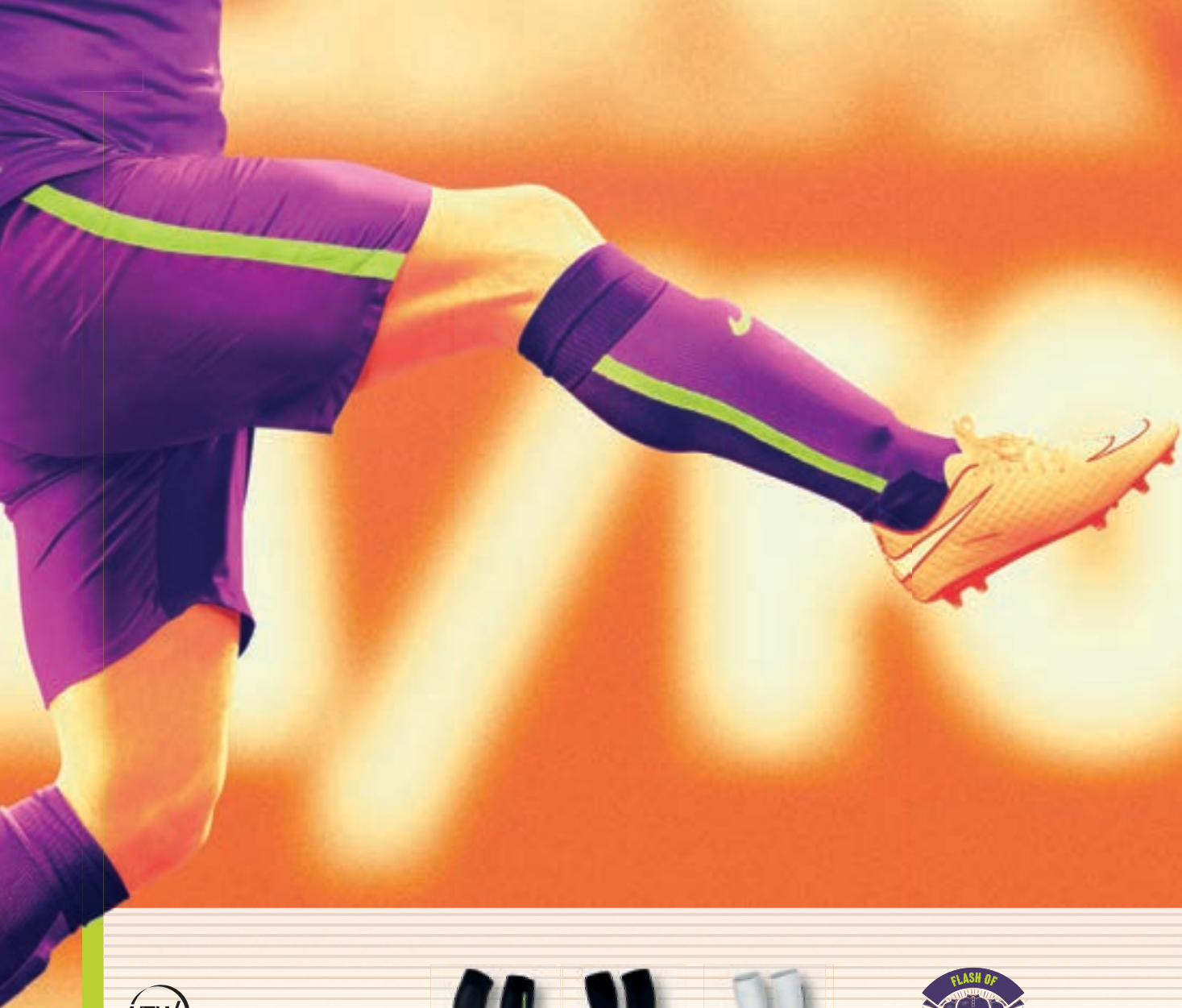
Life cycle: 01 April 2015 - 19 March 2016

A game-length design that helps to keep you comfortable while you're playing at your hardest.

- Elastic waistband with interior drawcord.
- Swoosh design trademark at left hem.
- Fabric: Dri-FIT 100% polyester.

448222	Men's	With brief		S	M	L	XL	2XL
448224	Men's	Without brief		S	M	L	XL	2XL
448262	Youth	With brief	XS	S	M	L	XL	
448263	Youth	Without brief	XS	S	M	L	XL	





NEW



Backview



011 Black/
Volt/ (Volt)



156 White/
Black/(Black)



463 Royal Blue/
White/(White)



547 Court
Purple/Volt/(Volt)



657 University
Red/Black/White



715 Volt/
Black/(Black)

VAPOR III SOCK

Life cycle: 01 April 2015 - 19 March 2018

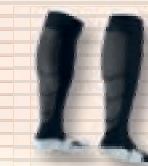
Eye-catching design, comfortable fit.

- Striped side panel. • Left-right specific callout for enhanced fit.
- Fabric: Dri-FIT 88% nylon/9% polyester/3% elastane.



645929	XS: Eur 30-34	S: Eur 34-38	M: Eur 38-42	L: Eur 42-46	XL: Eur 46-50
	XS: UK 12-2	S: UK 2-5	M: UK 5.5-7.5	L: UK 8-11	XL: UK 11-14.5

This product must be ordered in multiples of 6 pairs.



Backview



010 Black/
Anthracite*/
(White)



100 White/
Jetstream*/
(Black)



104 White/
Jetstream*/(Royal
Blue)



302 Pine Green/
Dark Cypress*/
(White)



410 Midnight Navy/
Game Royal*/
(White)



412 University Blue/
Italy Blue*/
(Midnight Navy)



463 Royal Blue/
Midnight Navy*/
(White)



657 University Red/
Gym Red*/
(White)



739 University Gold/
Sundial*/
(Black)

TEAM STADIUM II OTC SOCK

Life cycle: 01 April 2015 - 19 March 2016

The Nike Team Stadium II OTC sock with Dri-FIT technology and iconic design gives you the same look as the pro.

- Anatomical left and right cushioned footbed. • Arch support.
- Fabric: Dri-FIT 77% nylon/16% polyester/4% cotton/3% Spandex.



803326	XS: Eur 30-34	S: Eur 34-38	M: Eur 38-42	L: Eur 42-46	XL: Eur 46-50
	XS: UK 12-2	S: UK 2-5	M: UK 5.5-7.5	L: UK 8-11	XL: UK 11-14.5

This product must be ordered in multiples of 6 pairs.

* Colour of identifier.



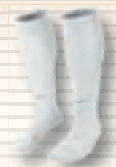
Backview



010 Black/
(White)



100 White/
(Black)



101 White/
(Royal Blue)



302 Pine
Green/(White)



411 Midnight
Navy/(White)



412 University
Blue/(White)



463 Royal
Blue/(White)



640 Voltage
Cherry/(Black)



648 University
Red/(White)



670 Team
Red/(White)



739 University
Gold/(Black)



740 University
Gold/(Royal Blue)



816 Safety
Orange/(Black)

CLASSIC II SOCK

Life cycle: 01 April 2015 - 19 March 2016

Comfortable traditional knee-high sock with Dri-FIT technology.

- Fold-over cuff. • Articulated footbed for superior fit.
- Fabric: Dri-FIT 95% nylon/5% Spandex.



394386	XS: Eur 30-34	S: Eur 34-38	M: Eur 38-42	L: Eur 42-46	XL: Eur 46-50
	XS: UK 12-2	S: UK 2-5	M: UK 5.5-7.5	L: UK 8-11	XL: UK 11-14.5

This product must be ordered in multiples of 6 pairs.



HOOPS II SOCK

Life cycle: 01 April 2015 - 19 March 2016

A traditional knee-high durable style with striped design.

- Anatomical left and right cushioned footbed.
- Fabric: Dri-FIT 90% nylon/7% polyester/3% Spandex.



803324	XS: Eur 30-34 XS: UK 12-2	S: Eur 34-38 S: UK 2-5	M: Eur 38-42 M: UK 5.5-7.5	L: Eur 42-46 L: UK 8-11	XL: Eur 46-50 XL: UK 11-14.5
--------	--	---	---	--	---

This product must be ordered in multiples of 6 pairs.



PARK IV SOCK

Life cycle: 01 April 2015 - 19 March 2016

A knee-high, durable and supportive design with cushioned foot.

- Non foldable ribbed cuffs.
- Arch support for a snug, secure fit.
- Reinforced heel and toe for enhanced durability in high-wear areas.
- Fabric: 93% nylon/4% cotton/2% acrylic/1% Spandex.

507815	XS: Eur 30-34 XS: UK 12-2	S: Eur 34-38 S: UK 2-5	M: Eur 38-42 M: UK 5.5-7.5	L: Eur 42-46 L: UK 8-11	XL: Eur 46-50 XL: UK 11-14.5
--------	--	---	---	--	---

This product must be ordered in multiples of 6 pairs.



STIRRUP III GAME SOCK

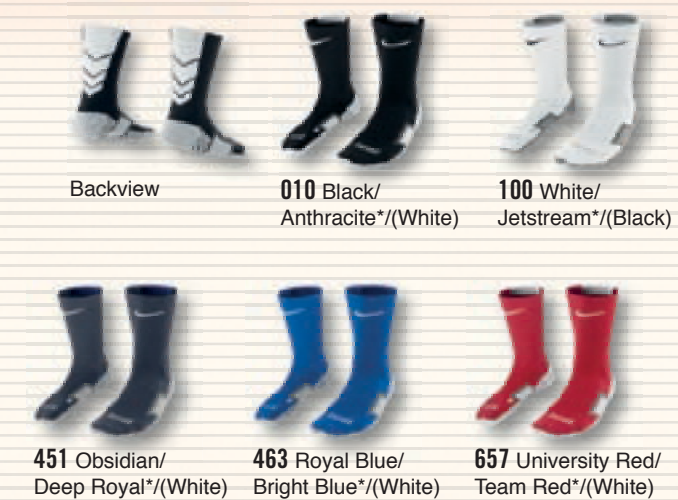
Life cycle: 01 April 2015 - 19 March 2018

A knee-high style with a rib design.

- Stirrup loop at bottom.
- Fabric: 88% nylon/9% polyester/ 3% Spandex.

507819	S/M: Eur 34-42 S/M: UK 2-7.5	L/XL: Eur 42-50 L/XL: UK 8-14.5
--------	---	--

This product must be ordered in multiples of 6 pairs.



TEAM STADIUM II CREW SOCK

Life cycle: 01 April 2015 - 19 March 2016

The Nike Team Stadium II Crew Sock with Dri-FIT technology and iconic design is perfect for training.

- Anatomical left and right cushioned footbed.
- Arch support.
- Fabric: Dri-FIT 72% nylon/20% polyester/5% cotton/3% Spandex.



803325	XS: Eur 30-34 XS: UK 12-2	S: Eur 34-38 S: UK 2-5	M: Eur 38-42 M: UK 5.5-7.5	L: Eur 42-46 L: UK 8-11	XL: Eur 46-50 XL: UK 11-14.5
--------	--	---	---	--	---

This product must be ordered in multiples of 6 pairs.

* Colour of identifier.

GOLEIRO

ID: HOWARD



Backview



010 Black/Solar Red/
(White)



307 Hyper Verde/Volt/
(White)



550 Bold Berry/
Electric Green/(White)



Backview



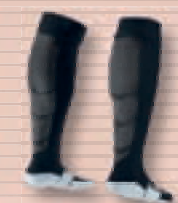
010 Black/
(White)



307 Hyper Verde/
(White)



550 Bold Berry/
(White)



Backview



010 Black/
Anthracite*/(White)



330 Hyper Verde/
Lucid Green*/(White)



550 Bold Berry/
Court Purple*/(White)

GOLEIRO JERSEY

Life cycle: 01 April 2015 - 19 March 2016

Ready to perform at your highest level.

- Lightweight sweat management. • Sublimated print.
- Fabric: Dri-FIT 100% polyester.



588416	Men's	Short Sleeve			S	M	L	XL	2XL
588417	Men's	Long Sleeve			S	M	L	XL	2XL

LASER II WOVEN SHORT

Life cycle: 01 April 2015 - 19 March 2016

The Nike Laser II woven short with Dri-FIT technology is perfect for gameday.

- Lightweight design. • Mesh back enhances ventilation.
- Elastic waistband with interior drawcord. • Fabric: Dri-FIT 100% polyester.



588415	Men's	Without brief			S	M	L	XL	2XL
--------	-------	---------------	--	--	---	---	---	----	-----

TEAM STADIUM II OTC SOCK

Life cycle: 01 April 2015 - 19 March 2016

The Nike Team Stadium II OTC sock with Dri-FIT technology and iconic design gives you the same look as the pro.

- Anatomical left and right cushioned footbed. • Arch support.
- Fabric: Dri-FIT 77% nylon/16% polyester/4% cotton/3% Spandex.



803326	XS: Eur 30-34	S: Eur 34-38	M: Eur 38-42	L: Eur 42-46	XL: Eur 46-50
	XS: UK 12-2	S: UK 2-5	M: UK 5.5-7.5	L: UK 8-11	XL: UK 11-14.5

This product must be ordered in multiples of 6 pairs.

* Colour of identifier.

PARK II

ID: COURTOIS



PARK II GOALIE JERSEY

Life cycle: 01 April 2015 - 19 March 2018

- Protect the goal.
- Elbow padding. • Lightweight sweat management.
 - Fabric: Dri-FIT 100% polyester.

588418	Men's	Long Sleeve		S	M	L	XL	2XL
588441	Youth	Long Sleeve	XS	S	M	L	XL	



PADDED GOALIE PANT/SHORT

Life cycle: 01 April 2015 - 19 March 2016

- Stay protected when you guard your turf.
- Lightweight design with padding at hips (and knees).
 - Elastic waist with drawcord. • Stirrup at the bottom hem.
 - Fabric: Body: Dri-FIT 100% polyester. • Lining: Dri-FIT 100% polyester.

480050	Men's	Pant		S	M	L	XL	2XL
480051	Men's	Short		S	M	L	XL	2XL
481444	Youth	Pant	XS	S	M	L	XL	
481445	Youth	Short	XS	S	M	L	XL	





NIKE PRO

**HYPERSTRONG****KEEPS YOU DRY****MOISTURE MANAGEMENT**

Dri-FIT fabric helps keep you dry and comfortable

MADE TO MOVE**SUPERIOR MOBILITY**

Engineered to allow optimum freedom of movement

KEEPS YOU PROTECTED**ZONED PROTECTION**

Designed to provide superior protection where needed

BUILT TO LAST**EXCEPTIONAL DURABILITY**

Built to deliver long-lasting performance and support



Backview

010 Black/
(Cool Grey)**091** Carbon Heather/
(Black)

Until 30 June 15

**010** Black/
Anthracite**091** Carbon Heather/
Black

From 01 July 15

**100** White/
(Cool Grey)**477** Dark Obsidian/
(Cool Grey)**494** Game Royal/
(Cool Grey)**653** Gym Red/
(Cool Grey)

Until 30 June 15

**100** White/
Matte Silver**451** Obsidian/
Dark Grey**480** Game Royal/
Deep Royal Blue**687** Gym Red/
Team Red

From 01 July 15

COOL COMPRESSION LONG SLEEVE TOP

High performance base layer long sleeve top. • Lightweight & breathable.

- Flatlock seams to reduce irritation from chafing. • New zoned thermoregulation with back panel mesh.
- New raglan sleeve construction. • New vented side-hem with drop tail. • Fabric: Dri-FIT 92% polyester / 8% elastane.

449794 Men's | S | M | L | XL | 2XL |

Life cycle: 01 April 2015 - 30 June 2015

703088 Men's | S | M | L | XL | 2XL |

Life cycle: 01 July 2015 - 19 March 2017



Backview

010 Black/(Black)**100** White/(White)**NPC ULTRALIGHT SLIDER SHORT**

Designed to protect you when you slide during the game.

- Key mesh fabric is placed in the heat zones for breathability. • Elastic waistband. • Deflex technology foam at waist and thighs helps absorb and disperse impact force. • Mesh gusset at front and back. • Flat-seam construction to help minimise chafing. • Fabric: Dri-FIT 70% polyester/30% elastane.

575273 Men's | S | M | L | XL | 2XL |

Life cycle: 01 April 2015 - 19 March 2017



Backview

010 Black/(Cool Grey)

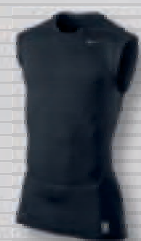
091 Carbon Heather/(Black)

Until 30 June 15

010 Black/Anthracite

091 Carbon Heather/Black

From 01 July 15

100 White/
(Cool Grey)477 Dark Obsidian/
(Cool Grey)494 Game Royal/
(Cool Grey)653 Gym Red/
(Cool Grey)

Until 30 June 15

100 White/
Matte Silver451 Obsidian/
Dark Grey480 Game Royal/
Deep Royal Blue687 Gym Red/
Team Red

From 01 July 15

COOL COMPRESSION SLEEVELESS TOP

High performance base layer sleeveless top. • Lightweight & breathable.

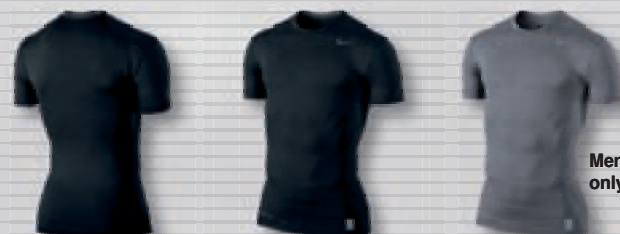
- Flatlock seams to reduce irritation from chafing. • New zoned thermoregulation with back panel mesh.
- New raglan sleeve construction. • New vented side-hem with drop tail. • Fabric: Dri-FIT 92% polyester / 8% elastane.

449791 Men's S M L XL 2XL

Life cycle: 01 April 2015 - 30 June 2015

NEW 703092 Men's S M L XL 2XL

Life cycle: 01 July 2015 - 19 March 2017



Backview

010 Black/(Cool Grey)

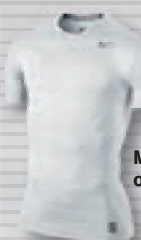
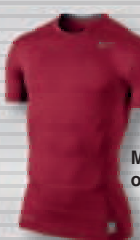
021 Carbon Heather/(Black)

Until 30 June 15

010 Black/Anthracite

091 Carbon Heather/Black

From 01 July 15

100 White/
(Cool Grey)477 Dark Obsidian/
(Cool Grey)494 Game Royal/
(Cool Grey)653 Gym Red/
(Cool Grey)

Until 30 June 15

100 White/
Matte Silver451 Obsidian/
Dark Grey480 Game Royal/
Deep Royal Blue687 Gym Red/
Team Red

From 01 July 15

COOL COMPRESSION SHORT SLEEVE TOP

High performance base layer short sleeve top. • Lightweight & breathable.

- Flatlock seams to reduce irritation from chafing. • New zoned thermoregulation with back panel mesh.
- New raglan sleeve construction. • New vented side-hem with drop tail. • Fabric: Dri-FIT 92% polyester / 8% elastane.

449792 Men's XS S M L XL 2XL

Life cycle: 01 April 2015 - 30 June 2015

522801 Youth XS S M L XL

NEW 703094 Men's XS S M L XL 2XL

Life cycle: 01 July 2015 - 19 March 2017

726462 Youth XS S M L XL

010 Black/
(Cool Grey)091 Carbon
Heather/(Black)100 White/
(Cool Grey)477 Dark Obsidian/
(Cool Grey)494 Game Royal/
(Cool Grey)653 Gym Red/
(Cool Grey)

Until 30 June 15

NEW 010 Black/
Anthracite091 Carbon
Heather/Black100 White/
Matte Silver451 Obsidian/
Dark Grey480 Game Royal/
Deep Royal Blue687 Gym Red/
Team Red

From 01 July 15

COOL COMPRESSION LONG SLEEVE MOCK TOP

High performance base layer mock. • Lightweight & breathable.

- Flatlock seams to reduce irritation from chafing. • New zoned thermoregulation with back panel mesh.
- New raglan sleeve construction. • New vented side-hem with drop tail. • Fabric: Dri-FIT 92% polyester / 8% elastane.

449795 Men's S M L XL 2XL

Life cycle: 01 April 2015 - 30 June 2015

NEW 703090 Men's S M L XL 2XL

Life cycle: 01 July 2015 - 19 March 2017



Backview



010 Black/(Cool Grey)



021 Carbon Heather/(Black)



100 White/(Cool Grey)

Until 30 June 15



010 Black/Anthracite

091 Carbon Heather/Black

100 White/Matte Silver

From 01 July 15

COOL COMPRESSION 6" SHORT

High performance base layer short. • Lightweight & breathable.

- Flatlock seams to reduce irritation from chafing. • New mesh gusset and inner leg panel for increased zoned thermoregulation. • Update Nike Pro Waistband. • Fabric: Dri-FIT 90% polyester / 10% elastane.

519977 Men's XS S M L XL 2XL

Life cycle: 01 April 2015 - 30 June 2015

522804 Youth XS S M L XL

NEW 703084 Men's XS S M L XL 2XL

Life cycle: 01 July 2015 - 19 March 2017

726461 Youth XS S M L XL



Backview



010 Black/(Cool Grey)



021 Carbon Heather/(Black)

Until 30 June 15



010 Black/Anthracite

091 Carbon Heather/Black

From 01 July 15

COOL COMPRESSION TIGHT

High performance base layer tight. • Lightweight & breathable.

- Flatlock seams to reduce irritation from chafing. • New mesh gusset and inner leg panel for increased zoned thermoregulation. • Update Nike Pro Waistband. • Fabric: Dri-FIT 90% polyester / 10% elastane.

449822 Men's S M L XL 2XL

Life cycle: 01 April 2015 - 30 June 2015

NEW 703098 Men's S M L XL 2XL

Life cycle: 01 July 2015 - 19 March 2017

SQUAD 15



ID: ISCO



ID: NEYMAR JR



ID: HAZARD



ID: MANDZUKIC

TEAM PERFORMANCE
SHIELD JACKET
p.61



LIBERO
3/4 PANT
p.62



VAPOR III SOCK
p.30



IGNITE
MIDLAYER
p.44



LIBERO TECH
KNIT PANT
p.63



KNIT JACKET
p.45



LIBERO TECH
KNIT PANT
p.63



FLASH
TRAINING TOP
p.44



LIBERO
KNIT SHORT
p.62



TEAM STADIUM II
CREW SOCK
p.33-65





FLASH TRAINING TOP

Life cycle: 01 April 2015 - 19 March 2017

Train with cool comfort.

- Mesh side and back panels enhance ventilation.
- Neckline: crew neck with non-restrictive fit.
- Nike Football verbiage in multiple languages printed on back neck tape.
- Fabric: Dri-FIT 100% polyester.

644665	Men's		S	M	L	XL	2XL
646401	Youth	XS	S	M	L	XL	



SIDELINE POLO

Life cycle: 01 April 2015 - 19 March 2017

Classic fit, comfortable performance.

- Seamless underarm construction enables unrestricted movement.
- Neckline: hidden 3-button placket.
- Nike Football verbiage in multiple languages printed on back neck tape.
- Fabric: Dri-FIT 100% polyester.

645538	Men's		S	M	L	XL	2XL
646405	Youth	XS	S	M	L	XL	



IGNITE MIDLAYER

Life cycle: 01 April 2015 - 19 March 2017

Perform in comfort.

- Articulated elbows and seamless underarm construction enable movement without restriction.
- Neckline: stand-up collar with 1/4 length zip.
- Nike Football verbiage in multiple languages printed on back neck tape.
- Fabric: Dri-FIT 100% polyester.

645472	Men's		S	M	L	XL	2XL
646404	Youth	XS	S	M	L	XL	



SIDELINE KNIT JACKET

Life cycle: 01 April 2015 - 19 March 2017

Articulated elbows and seamless underarm construction enable movement without restriction.

- Zippered pockets.
- Nike Football verbiage in multiple languages printed on back neck tape.
- Fabric: Dri-FIT 100% polyester.

645478	Men's		S	M	L	XL	2XL
645900	Youth	XS	S	M	L	XL	



SIDELINE WOVEN JACKET

Life cycle: 01 April 2015 - 19 March 2017

Seamless underarm construction enable movement without restriction.

- Zippered pockets.
- Water-repellant.
- Nike Football verbiage in multiple languages printed on back neck tape.
- Fabric: Dri-FIT 100% polyester.

645476	Men's		S	M	L	XL	2XL
645903	Youth	XS	S	M	L	XL	



SQUAD 14



ID: EL SHAARAWY



ID: STERLING

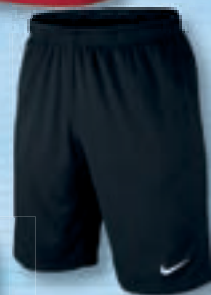


ID: WELBECK

TRAINING TOP
p. 48



LIBERO
KNIT SHORT
p. 62



CLASSIC II
SOCK
p. 31



SIDELINE
KNIT JACKET
p. 50



LIBERO TECH
KNIT PANT
p. 63



SHELL TOP
p. 49



LIBERO
3/4 PANT
p. 62





Backview

010 Black/Wolf Grey/
Anthracite/White302 Electric Green/
Anthracite/Black/
(Anthracite)410 Midnight Navy/
White/Black/White463 Royal Blue/University
Blue/Obsidian/White657 University Red/
White/Black/White

Suggestion

588457
Libero Knit Short
p. 62

TRAINING TOP

Life cycle: 01 April 2015 - 19 March 2016

The Nike Squad 14 Training Top with Dri-FIT technology is inspired by European top clubs.

- Neckline: constructed crew neck. • Mesh back panel for enhanced breathability.
- Side seams are rocked forward for a perfect fit. • Fabric: Dri-FIT 100% polyester.

588462	Men's		S	M	L	XL	2XL
588397	Youth	XS	S	M	L	XL	



Backview

010 Black/
Black/White060 Anthracite/
Black/White100 White/Anthracite/
(Anthracite)451 Obsidian/
Black/White463 Royal Blue/
Obsidian/White657 University Red/
Black/White

Suggestion

588459
Libero
3/4 Knit Pant
p. 62

POLO

Life cycle: 01 April 2015 - 19 March 2016

The Nike Squad 14 Polo with Dri-FIT technology combines a modern fit with a classic design.

- Stretch fit. • Two-button placket. • Fabric: Dri-FIT 100% polyester.

588461	Men's		S	M	L	XL	2XL
588394	Youth	XS	S	M	L	XL	



Backview

010 Black/Anthracite/
Anthracite/White060 Anthracite/Black/
Electric Green/White463 Royal Blue/Obsidian/
Obsidian/White657 University Red/
Black/Black/White

Suggestion

588460
Libero Tech
Knit Pant
p. 63

MIDLAYER

Life cycle: 01 April 2015 - 19 March 2016

The Squad 14 Midlayer with Dri-FIT technology keeps you comfortable and warm for warm up and training.

- 1/4 length zipper. • Stand-up collar. • Side seams are rocked forward for a better fit.
- Fabric: Dri-FIT 100% polyester.

588464	Men's		S	M	L	XL	2XL
588399	Youth	XS	S	M	L	XL	



Backview

010 Black/Anthracite/
White/White060 Anthracite/Black/
Electric Green/White463 Royal Blue/Obsidian/
White/White657 University Red/Black/
White/White

Suggestion

588460
Libero Tech
Knit Pant
p. 63

SHELL TOP

Life cycle: 01 April 2015 - 19 March 2016

The Squad 14 Shell Top with Dri-FIT technology keeps you comfortable and dry in all weather conditions.

- Wind and water resistance without restricting breathability. • Under arm mesh panels and upper back vent enhances ventilation. • Fabric: Dri-FIT 100% polyester.

588467	Men's		S	M	L	XL	2XL
588405	Youth	XS	S	M	L	XL	





Backview

010 Black/Anthracite/
(White)



060 Anthracite/Electric
Green/(White)



451 Obsidian/White/
(White)



463 Royal Blue/
Obsidian/(White)



657 University Red/
Black/(White)

Suggestion



588483
Libero Knit Pant
p. 63

SIDELINE KNIT JACKET

Life cycle: 01 April 2015 - 19 March 2016

The Nike Squad 14 Sideline Knit Jacket with Dri-FIT technology is the best choice for warm-up and training.

- Lightweight training jacket with ergonomic fit. • Zipped side-pockets.
- Fabric: Dri-FIT 100% polyester.

588466	Men's		S	M	L	XL	2XL
588396	Youth	XS	S	M	L	XL	



Backview

010 Black/Anthracite/
(White)



060 Anthracite/Electric
Green/(White)



451 Obsidian/White/
(White)



463 Royal Blue/
Obsidian/(White)



657 University Red/
Black/(White)

Suggestion



588458
Libero Woven
Pant Cuffed
p. 64

SIDELINE WOVEN JACKET

Life cycle: 01 April 2015 - 19 March 2016

The Nike Squad 14 Sideline Woven Jacket with Dri-FIT technology is the best choice to look like the pros before and after the game.

- Lightweight presentation jacket with ergonomic fit. Wind- and water-resistant.
- Zipped side-pockets. • Fabric: Dri-FIT 100% polyester.

588465	Men's		S	M	L	XL	2XL
588398	Youth	XS	S	M	L	XL	



ACADEMY 14



ID: LEWANDOWSKI



ID: GÖTZE



ID: ALEXIS SANCHEZ

MIDLAYER TOP
p. 54



TEAM SCRIMMAGE
SWOOSH VEST
p. 65



LIBERO
3/4 PANT
p. 62



CLASSIC II SOCK
p. 31



TRAINING TOP
p. 54



LIBERO
KNIT SHORT
p. 62



TEAM STADIUM II
CREW SOCK
p. 33 & 65



TRAINING TOP
p. 54



LIBERO
KNIT SHORT
p. 62



TEAM STADIUM II
CREW SOCK
p. 33 & 65





Backview

010 Black/White/
(White)100 White/Black/
(Black)302 Pine Green/
White/(White)463 Royal Blue/
White/(White)657 University
Red/White/(White)739 University
Gold/Black/(Black)

Suggestion

588457
Libero Knit Short
p. 62803325
Team Stadium II
Crew Sock
p. 33 & 65

TRAINING TOP

Life cycle: 01 April 2015 - 19 March 2018

The Nike Academy Training Top with Dri-FIT technology and unique design.

- V-neck with overlap. • Mesh panels enhances ventilation.
- Fabric: Dri-FIT 100% polyester.

588468	Men's		S	M	L	XL	2XL
588390	Youth	XS	S	M	L	XL	



Backview

010 Black/White/
(White)302 Pine Green/
White/(White)463 Royal Blue/
White/(White)657 University
Red/White/(White)739 University
Gold/Black/(Black)

Suggestion

588460
Libero Tech
Knit Pant
p. 63

MIDLAYER TOP

Life cycle: 01 April 2015 - 19 March 2018

The Nike Academy Midlayer Top offers comfort and warmth thanks to Dri-FIT fabric.

- Ergonomic fit. • Cuff with thumb-loop.
- Fabric: Dri-FIT 100% polyester.

588471	Men's		S	M	L	XL	2XL
588401	Youth	XS	S	M	L	XL	



Backview

010 Black/White/
(White)302 Pine Green/
White/(White)463 Royal Blue/
White/(White)657 University
Red/White/(White)739 University
Gold/Black/(Black)

Suggestion

588483
Libero Knit Pant
p. 63

SIDELINE KNIT JACKET

Life cycle: 01 April 2015 - 19 March 2018

The Academy Sideline Knit Jacket is ideal for the pitch or training.

- Dri-FIT fabric keeps you comfortable and dry. • Zipped side-pockets.
- Fabric: Dri-FIT 100% polyester.

588470	Men's		S	M	L	XL	2XL
588400	Youth	XS	S	M	L	XL	



Backview

010 Black/White/
(White)302 Pine Green/
White/(White)463 Royal Blue/
White/(White)657 University
Red/White/(White)739 University Gold/
Black/(Black)

Suggestion

588482
Libero Woven
Pant Uncuffed
p. 64

SIDELINE WOVEN JACKET

Life cycle: 01 April 2015 - 19 March 2018

The Academy Sideline Woven Jacket is wind- and water-resistant.

- Dri-FIT fabric keeps you warm and protected before and after the game.
- Zipped side-pockets. • Mesh side panels enhances ventilation.
- Fabric: Dri-FIT 100% polyester.

588473	Men's		S	M	L	XL	2XL
588402	Youth	XS	S	M	L	XL	



FOUNDATION 12



ID: JESÉ RODRIGUEZ



ID: ERIKSEN

MIDLAYER TOP
p. 58



LIBERO TECH
KNIT PANT
p. 63



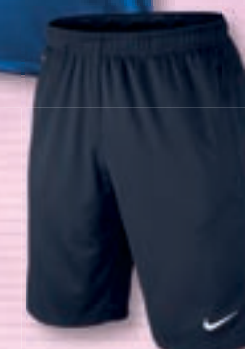
TRAINING TOP
p. 58



CLASSIC II
SOCK
p. 31



LIBERO
KNIT SHORT
p. 62





Suggestion



588457
Libero Knit Short
p. 62



803325
Team Stadium II
Crew Sock
p. 33 & 65

TRAINING TOP

Life cycle: 01 April 2015 - 19 March 2016

Get the fit and ventilation you need to practise your moves.

• Mesh side panels. • Crew-neck. • Fabric: Dri-FIT 100% polyester.

447430	Men's		S	M	L	XL	2XL
447419	Youth	XS	S	M	L	XL	



MIDLAYER TOP

Life cycle: 01 April 2015 - 19 March 2016

Stay insulated while you train.

• Long-sleeve design with soft fabric for a comfortable fit.
• Ribbed cuffs and neck line, piping inserts across raglan sleeve.
• Fabric: Dri-FIT 99% polyester/1% elastane.

447434	Men's		S	M	L	XL	2XL
447423	Youth	XS	S	M	L	XL	



POLY JACKET

Life cycle: 01 April 2015 - 19 March 2016

Run the pitch with sweat-wicking power and prestige, a lightweight fit.

• Mock-neck. • Side-zip pockets. • Contrast piping on shoulders.
• Fabric: Dri-FIT 100% polyester.

473958	Men's		S	M	L	XL	2XL
476746	Youth	XS	S	M	L	XL	



Suggestion



588482
Libero Woven
Pant Uncuffed
p. 64

SIDELINE JACKET

Life cycle: 01 April 2015 - 19 March 2016

Keeps you warm before the match.

• With piping inserts across raglan sleeves. • Zip pocket and back yoke vent.
• Water-repellent. • Zipper till mock-neck. • Fabric: Dri-FIT 100% polyester.

447435	Men's		S	M	L	XL	2XL
447424	Youth	XS	S	M	L	XL	



Suggestion



588460
Libero Tech
Knit Pant
p. 63

RAIN JACKET

Life cycle: 01 April 2015 - 19 March 2016

Keeps you on a high performance level during bad weather conditions.

• Lightweight design and foldable hoodie. • Zipped side-pockets.
• Fabric: 100% nylon.

447432	Men's		S	M	L	XL	2XL
447421	Youth	XS	S	M	L	XL	

GENERIC



Backview

010 Black/Anthracite/White

451 Obsidian/Dark Obsidian/White

Suggestion



588460
Libero Tech
Knit Pant
p. 63

TEAM FALL JACKET

Life cycle: 01 April 2015 - 19 March 2019

No excuses.

- Lining fabric made of polyester provides soft and warm comfort.
- 2 side zippered pockets. • Fleece lining. • Adjustable hood. • Wind and water resistance. • Fabric: Storm-Fit 100% polyester.

645550	Men's		S	M	L	XL	2XL
645905	Youth	XS	S	M	L	XL	



Backview

010 Black/White

451 Obsidian/White

463 Royal Blue/White

657 University Red/White

TEAM SIDELINE RAIN JACKET

Life cycle: 01 April 2015 - 19 March 2019

Play the elements.

- Full-zip. • Hood with adjustment toggles. • Elastic hem drawcord for a personalized fit. • 2 side zippered pockets. • Water-repellent.
- Fabric: Dri-FIT 100% nylon.

645480	Men's		S	M	L	XL	2XL
645908	Youth	XS	S	M	L	XL	



Backview

010 Black/White

011 Black/Volt/White



451 Obsidian/White

463 Royal Blue/White

657 University Red/White

TEAM PERFORMANCE SHIELD JACKET

Life cycle: 01 April 2015 - 19 March 2019

Transform, perform.

- Full-zip. • Stand-up collar. • Packable into left chest pocket. • Water-repellent.
- Fabric: Storm-Fit 100% polyester.

645539	Men's		S	M	L	XL	2XL
645904	Youth	XS	S	M	L	XL	



Backview

010 Black/White

451 Obsidian/White

TEAM WINTER JACKET

Life cycle: 01 April 2015 - 19 March 2019

Bad weather, same range of motion.

- Insulated design provides low-profile warmth. • Side seam zippered pockets deliver secure storage. • Detachable hood. • Wind and water resistance.
- Fabric: Storm-Fit 100% polyester.

645484	Men's		S	M	L	XL	2XL
645907	Youth	XS	S	M	L	XL	





Backview 010 Black/(White) 451 Obsidian/(White)

LIBERO KNIT SHORT

Life cycle: 01 April 2015 - 19 March 2018

The Nike Libero knit short with Dri-FIT technology is a comfortable short that keeps you focused on the training pitch.

- Mesh inserts enhance ventilation. • Side-zip pockets. • Elastic waistband with interior drawcord.
- Fabric: Dri-FIT 100% polyester.

588457	Men's		S	M	L	XL	2XL
588403	Youth	XS	S	M	L	XL	



Backview 010 Black/(White) 451 Obsidian/(White)

LIBERO 3/4 KNIT PANT

Life cycle: 01 April 2015 - 19 March 2018

The Nike Libero 3/4 Knit Pant with Dri-FIT technology is a sweat-wicking essential.

- Side-zip pockets. • Mesh back enhances ventilation. • Elastic waistband with interior drawcord.
- Fabric: Dri-FIT 100% polyester.

588459	Men's		S	M	L	XL	2XL
588392	Youth	XS	S	M	L	XL	



Backview 010 Black/(White) 451 Obsidian/(White)

LIBERO TECH KNIT PANT

Life cycle: 01 April 2015 - 19 March 2018

The Nike Libero Tech Knit Pant with Dri-FIT technology and tight fit is perfect for training and warm up.

- Concealed zips on leg hem. • Mesh back enhances ventilation.
- Elastic waistband with interior drawcord. • Fabric: Dri-FIT 100% polyester.

588460	Men's		S	M	L	XL	2XL
588393	Youth	XS	S	M	L	XL	



Backview 010 Black/(White) 451 Obsidian/(White)

LIBERO KNIT PANT

Life cycle: 01 April 2015 - 19 March 2018

The Nike Libero Knit Pant with Dri-FIT technology is a classic pant for training and warm-up.

- Side-zip pockets and concealed zips on leg hem. • Mesh back enhances ventilation.
- Elastic waistband with interior drawcord. • Fabric: Dri-FIT 100% polyester.

588483	Men's		S	M	L	XL	2XL
588455	Youth	XS	S	M	L	XL	





LIBERO WOVEN PANT CUFFED

Life cycle: 01 April 2015 - 19 March 2018

The Nike Libero Woven Pant Cuffed with Dri-FIT technology is water-repellent and is ideal to wear before and after the game.

- Side-zip pockets and concealed zips on leg hem.
- Mesh back enhances ventilation.
- Elastic waistband with interior drawcord.
- Fabric: Dri-FIT 100% polyester.

588458	Men's		S	M	L	XL	2XL
588453	Youth	XS	S	M	L	XL	



LIBERO WOVEN PANT UNCUFFED

Life cycle: 01 April 2015 - 19 March 2018

The Nike Libero Woven Pant Uncuffed with Dri-FIT technology is water-repellent and is ideal to wear before and after the game.

- Side-zip pockets and concealed zips on leg hem.
- Mesh back enhances ventilation.
- Elastic waistband with interior drawcord.
- Fabric: Dri-FIT 100% polyester.

588482	Men's		S	M	L	XL	2XL
588404	Youth	XS	S	M	L	XL	



TEAM SCRIMMAGE SWOOSH VEST

Life cycle: 01 April 2015 - 19 March 2016

A lightweight essential for those important practice matches.

- Crew-neck.
- Swoosh design trademark at front.
- Fabric: 100% polyester.

361109	S/M	L/XL
--------	-----	------



TEAM STADIUM II CREW SOCK

Life cycle: 01 April 2015 - 19 March 2016

The Nike Team Stadium II Crew Sock with Dri-FIT technology and iconic design is perfect for training.

- Anatomical left and right cushioned footbed.
- Arch support.
- Fabric: Dri-FIT 72% nylon/20% polyester/5% cotton/3% Spandex.



803325	XS: Eur 30-34	S: Eur 34-38	M: Eur 38-42	L: Eur 42-46	XL: Eur 46-50
	XS: UK 12-2	S: UK 2-5	M: UK 5.5-7.5	L: UK 8-11	XL: UK 11-14.5

This product must be ordered in multiples of 6 pairs.

* Colour of identifier.

LIFESTYLE



ID: BOATENG



ID: WILSHERE

TEAM CLUB
FULL ZIP HOODY
p. 71



TEAM CLUB CUFF
PANT
p. 70



TEAM CLUB
BLEND TEE
p. 70



TS CORE POLO
p. 68



TEAM CLUB
TRAINER JACKET
p. 69



TEAM CLUB
TRAINER PANT
p. 69



NEW



TEAM CLUB CAP

Life cycle: 01 April 2015 - 19 March 2019

Wear it before or after the game.
• Snapback design. • Swoosh on the side. • Fabric: 100% cotton canvas.

646398 One size fits all

NEW



TS CORE POLO

Life cycle: 01 April 2015 - 19 March 2019

Bring a touch of class to your style and look like a champion.
• Two-button placket polo with box and cross stitch at bottom.
• Fully fashioned rib collar and sleeve hem. • Side vent with twill tape finish.
• Fabric: 100% cotton. Standard fit.

454800	Men's		S	M	L	XL	2XL
456000	Youth	XS	S	M	L	XL	



TS LONGER WOVEN SHORT

Life cycle: 01 April 2015 - 19 March 2016

Express your football looks off the pitch.
• Insert sideseam panel short with overlays on the side. • Elasticated waistband and drawcord. • Side welt pockets with zipper. • Fabric: 100% polyester.

454797	Men's		S	M	L	XL	2XL
456004	Youth	XS	S	M	L	XL	

NEW



TEAM CLUB TRAINER JACKET

Life cycle: 01 April 2015 - 19 March 2019

Striped pattern print on shoulders and upper sleeves.
• Stand-up collar enhances coverage around the neck. • Full-front zipper.
• Side seam pockets. • Fabric: 100% polyester.

658683	Men's		S	M	L	XL	2XL
658940	Youth	XS	S	M	L	XL	

NEW



TEAM CLUB TRAINER PANT

Life cycle: 01 April 2015 - 19 March 2019

Modern tapered fit with zippered ankle hems.
• Striped pattern print on upper legs. • Mesh back yoke enhances ventilation.
• Zippered side pockets. • Elastic waistband with internal drawcord.
• Fabric: 100% polyester.

655952	Men's		S	M	L	XL	2XL
655953	Youth	XS	S	M	L	XL	

NEW



010 Black/(White)

451 Obsidian/(White)

TEAM PERFORMANCE BEANIE

Life cycle: 01 April 2015 - 19 March 2019

Knitted Beanie with dedicated space for club crest on center front and embroidered swoosh design trademark at back side. • Fabric: 100% acrylic.

646406 One size fits all

NEW



Backview

010 Black/Black/
(White)156 White/White/
(Black)451 Obsidian/
Obsidian/(White)463 Royal Blue/
Royal Blue/(White)657 University Red/
University Red/(White)**TEAM CLUB BLEND TEE**

Life cycle: 01 April 2015 - 19 March 2019

Rib crew-neck.

- Swoosh design trademark on right chest.
- Fabric: 65% cotton/35% polyester.

658045	Men's		S	M	L	XL	2XL
658494	Youth	XS	S	M	L	XL	

NEW



Backview

010 Black/
Black/(White)050 Grey Heather/
Grey Heather/(White)451 Obsidian/
Obsidian/(White)**TEAM CLUB CUFF PANT**

Life cycle: 01 April 2015 - 19 March 2019

French terry fabric provides soft and warm comfort.

- Side seam pockets and and back pocket with concealed snap closure.
- Internal drawcord. • Fabric: 80% cotton/20% polyester fleece.

658679	Men's		S	M	L	XL	2XL
658939	Youth	XS	S	M	L	XL	

NEW



Backview

010 Black/
Black/(White)050 Grey Heather/
Grey Heather/(White)451 Obsidian/
Obsidian/(White)463 Royal Blue/
Royal Blue/(White)657 University Red/
University Red/(White)**TEAM CLUB CREW**

Life cycle: 01 April 2015 - 19 March 2019

French terry fabric provides soft and warm comfort.

- Ribbed neck, cuffs and hem offer a snug fit. • Crew-neck.
- Fabric: 80% cotton/20% polyester fleece.

658681	Men's		S	M	L	XL	2XL
658941	Youth	XS	S	M	L	XL	

TEAM CLUB HOODY

- Split kangaroo pocket for easy access storage.
- Ribbed hem and cuffs.
- Fabric 80% cotton/20% polyester fleece.

658498	Men's		S	M	L	XL	2XL
658500	Youth	XS	S	M	L	XL	

TEAM CLUB FULL ZIP HOODY

- Split kangaroo pocket for easy access storage.
- Full-zip design with hood. • Ribbed hem and cuffs.
- Fabric 80% cotton/20% polyester fleece.

658497	Men's		S	M	L	XL	2XL
658499	Youth	XS	S	M	L	XL	

WOMEN'S MATCHDAY

ID: MORGAN



Backview

010 Black/Black/
White/(White)

100 White/White/
Black/(Black)



463 Royal Blue/
Royal Blue/White/
(White)

617 University Red/
White/University Red/
(White)

739 University Gold/
Black/University Gold/
(Black)

815 Safety Orange/
Black/Safety Orange/
(Black)

WOMEN'S TROPHY II JERSEY

Life cycle: 01 April 2015 - 19 March 2017

Master the pitch, any pitch.

- Neckline: Rib V-neck with overlap.
- Lightweight sweat management.
- Mesh back panel.
- Fabric: Dri-FIT 100% polyester.

588505 Women's | S | M | L | XL |



Backview

010 Black/(White)



100 White/(Black)

463 Royal Blue/(White)

617 University Red/(White)

WOMEN'S WOVEN SHORT

Life cycle: 01 April 2015 - 19 March 2017

A classic lightweight short with a tough Dri-FIT fabric and authentic design.

- Elastic waistband with interior drawcord.
- Fabric: Dri-FIT 100% polyester.

651318 Women's | S | M | L | XL |



WOMEN'S TRAINING

ID: BOULLEAU



Backview 010 Black/White/(White) 100 White/Black/(Black) 463 Royal Blue/White/(White) 657 University Red/White/(White)

WOMEN'S ACADEMY 14 TRAINING TOP

Life cycle: 01 April 2015 - 19 March 2018

The Nike Women's Academy Training Top with Dri-FIT technology and unique design.

- V-neck with overlap. • Mesh panels enhances ventilation.
- Fabric: Dri-FIT 100% polyester.

616604 Women's | S M L XL | |



Backview 010 Black/White/(White) 100 White/Black/(Black) 463 Royal Blue/White/(White) 657 University Red/White/(White)

WOMEN'S ACADEMY 14 SIDELINE KNIT JACKET

Life cycle: 01 April 2015 - 19 March 2018

The Women's Academy Sideline Knit Jacket is ideal for the pitch or training.

- Dri-FIT fabric keeps you comfortable and dry. • Zipped side-pockets.
- Fabric: Dri-FIT 100% polyester.

616605 Women's | S M L XL | |



Backview 010 Black/(White) 451 Obsidian/(White)

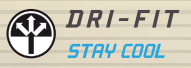
WOMEN'S LIBERO KNIT PANT

Life cycle: 01 April 2015 - 19 March 2018

The Nike Women's Libero Knit Pant with Dri-FIT technology is a classic pant for training and warm-up.

- Side-zip pockets and concealed zips on leg hem. • Mesh back enhances ventilation.
- Elastic waistband with interior drawcord. • Fabric: Dri-FIT 100% polyester.

588516 Women's | S M L XL | |



REFEREE

ID: CLATTENBURG



Backview



010 Black/
White/White



067 Gamma Grey/
White/Black



311 Turbo Green/
White/White



358 Electrolime/
Black/Black



Backview



010 Black/
(White)



067 Gamma Grey/
(Black)



311 Turbo Green/
(White)



358 Electrolime/
(Black)



Backview



010 Black/Anthracite*/
(White)



067 Gamma Grey/
Neutral Grey*/(Black)



311 Turbo Green/New
Green*/(White)



358 Electrolime/
Sonic Yellow*/(Black)

REFEREE JERSEY

Life cycle: 01 April 2015 - 19 March 2016

Purposeful, comfortable and gives you authority every time you lead the game.

- Small stand-up collar. • Two-button placket. • Two chest pockets with tape finishing detail and velcro closure. • Set in sleeves with side mesh panel with no underarm seam for improved movement as referee. • Fabric: Dri-FIT 96% polyester/4% cotton.

619169	Men's	Short Sleeve		S	M	L	XL	2XL
619170	Men's	Long Sleeve		S	M	L	XL	2XL



REFEREE SHORT

Life cycle: 01 April 2015 - 19 March 2016

The Nike Referee Dri-FIT woven short with three pockets is great for carrying the items you need during the game.

- With drawcord and elasticated waistband. • Side vents at leg hem. • Two front pockets external back pocket with velcro closure and puller. • Fabric: Dri-FIT 100% polyester.

619171	Men's	Without Brief		S	M	L	XL	2XL
--------	-------	---------------	--	---	---	---	----	-----



REFEREE SOCK

Life cycle: 01 April 2015 - 19 March 2016

The Performance Sock which helps you to comfortably master the match.

- Knitted sock in Dri-FIT technology with performance footbed. • Fabric: 75% nylon/22% polyester/3% Spandex.

619168	XS: Eur 30-34	S: Eur 34-38	M: Eur 38-42	L: Eur 42-46	XL: Eur 46-50
	XS: UK 12-2	S: UK 2-5	M: UK 5.5-7.5	L: UK 8-11	XL: UK 11-14.5



This product must be ordered in multiples of 6 pairs.

* Colour of identifier.

THE NIKE PREMIER



FIT

X1 LAST — CLOSE TO FOOT
OUT OF BOX COMFORT

TOUCH

PREMIER LEATHER
PREMIUM TOUCH
BENCHMARK SOFTNESS / FEEL

TRACTION

TRANSITIONAL FLEX
VERSATILE COMFORT



018 Black/Summit White-Orange Blaze

NIKE PREMIER

A great, classic performance boot with timeless design offering a full leather upper for Great ball touch and feel.

- Upper: soft and supple k-leather vamp and goat leather quarter and heel provide superior ball touch and comfort. Anatomical last delivers glove-like fit.
- Midsole: molded pe sockliner amplifies the natural foot shape and creates low profile Cushioning.
- Outsole: engineered performance insole board with lightweight TPU-plate provides transitional flex, comfort and traction across a variety of pitch conditions.

Life cycle: 01 April 2015 - 31 March 2018

FG 599427 Size: 5-13 14, 15
SG 698596 Size: 5-13 14, 15



010 Black/White

NIKE TIEMPO GENIO LEATHER FG

Core level boot offering a natural leather upper for touch and comfort.

- For use on firm ground surfaces.
- Upper: soft full-grain natural leather for comfort and good ball touch.
- Midsole: high density, die cut eva sockliner reduces stud pressure.
- Outsole: TPU plate with conical and bladed studs configuration to provide traction and stability, with zero stud pressure.

Life cycle: 01 April 2015 - 31 December 2015

631282 Size: 6-13 14, 15



010 Black/White

NIKE TIEMPO GENIO LEATHER IC

Great boot to use on indoor court surfaces, with natural leather upper for touch and comfort.

- Upper: soft full-grain natural leather for comfort and good ball touch.
- Midsole: full length phylon midsole for cushioning with high density, die cut eva sockliner reduces stud pressure.
- Outsole: articulated outsole with non-marking gum rubber and newly designed traction pattern and pivot point for optimal traction on indoor court surfaces.

Life cycle: 01 April 2015 - 31 December 2015

631283 Size: 6-13 14, 15



010 Black/White

NIKE TIEMPO GENIO LEATHER TF

The Tiempo Genio Leather TF is a great boot to wear play on turf pitches.

- Upper: soft full-grain natural leather for comfort and good ball touch.
- Midsole: full length phylon midsole for cushioning with high density, die cut eva sockliner reduces stud pressure.
- Outsole: articulated outsole with turf studs and pivot point for optimal traction on Turf surfaces.

Life cycle: 01 April 2015 - 31 December 2015

631284 Size: 6-13 14, 15

EQUIPMENT

**DECISIVE ACCURACY.
PERFECTLY CONTROLLED
TOUCH.**



NIKE ORDEM **FLIGHT PERFECTED**

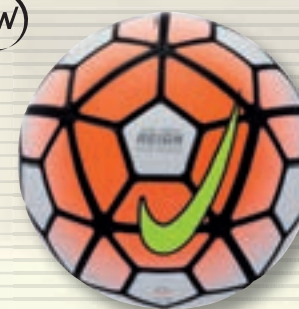
UNRIVALED FLIGHT CONTROL
THROUGH
AERODYNAMIC GROOVES



**NIKE
FOOTBALL**



NEW



100 White/Total Orange/
Black/(Volt)



NIKE ORDEM 3

A high-tech combination of responsive touch, visibility and straight flight.

- Micro-textured casing equalizes surface air flow enhancing control.
- Geometric Precision distributes pressure evenly for consistent, accurate and powerful strike.
- Perfect Sphericity allows ball to fly faster, further and more accurately.
- Compressed Polyethylene Layer stores energy and releases it at launch.
- Material: 40% leather/20% polyester/10% cotton/30% rubber.

Life cycle: 01 June 2015 - 30 June 2016

SC2714 Size: 5

NEW



100 White/Total Orange/
Black/(Volt)



NIKE PREMIER TEAM FIFA

Expertly crafted with hand-stitched panels and ultra strong interior construction for shape retention.

- FIFA approved.
- Geo Balanced Technology for truer flight.
- Hand-stitched PU casing for durability.
- 2 Year stitch and shape guarantee.
- Material: 22% polyurethane/46% rubber/29% polyester/3% cotton.

Life cycle: 01 June 2015 - 30 June 2016

SC2735 Size: 5

NEW



100 White/Total Orange/
Black/(Volt)

NIKE CLUB TEAM

The perfect combination of quality and durability.

- Hand-stitched panels creates a consistent round shape, while strong interior helps retain air.
- Geo Balanced Technology for truer flight.
- Hand-stitched PU casing for durability.
- 2 Year stitch and shape guarantee.
- Material: 47% rubber/27% polyester/18% polyurethane/8% cotton.

Life cycle: 01 June 2015 - 30 June 2016

SC2724 Size: 3,4,5



167 White/Red/
(Total Orange)



NIKE TEAM CATALYST

Designed for a super-soft touch with a 360 sweet spot when striking the ball.

- FIFA approved.
- Premium TPU casing for supreme ball feel and durability.
- Perfect sphericity.
- 2 Year stitch and shape guarantee.
- Material: 28% polyurethane/44% rubber/26% polyester/2% cotton.

Life cycle: 01 April 2015 - 31 March 2016

SC2365 Size: 5



177 White/Gold/
(Total Orange)



(SC2274 only)

NIKE PREMIER TEAM FIFA

Expertly crafted with hand-stitched panels and ultra strong interior construction for shape retention.

- FIFA approved (SC2274 only).
- Geo Balanced Technology for truer flight.
- Hand-stitched PU casing for durability.
- 2 Year stitch and shape guarantee.
- Material: 22% polyurethane/46% rubber/29% polyester/3% cotton.

Life cycle: 01 April 2015 - 31 March 2016

SC2274 Size: 5
SC2367 Size: 4



107 White/Black/
(Total Orange)

NIKE CLUB TEAM

The perfect combination of quality and durability.

- Hand-stitched panels creates a consistent round shape, while strong interior helps retain air.
- Geo Balanced Technology for truer flight.
- Hand-stitched PU casing for durability.
- 2 Year stitch and shape guarantee.
- Material: 47% rubber/27% polyester/18% polyurethane/8% cotton.

Life cycle: 01 April 2015 - 31 March 2016

SC2283 Size: 3,4,5



168 White/Red/
(Orange)

290G



148 White/Blue/
(Orange)

350G

NIKE LIGHTWEIGHT 290G/ 350G

A kids training essential.

- Designed for lightweight feel, straight flight off the foot and a soft touch.
- Geo Balanced Technology for truer flight.
- Lightweight, hand-stitched PU casing.
- 2 Year stitch and shape guarantee.
- Material: 18% polyurethane/52% rubber/26% polyester/4% cotton.

Life cycle: 01 April 2015 - 31 March 2016

SC2374 Size: 4,5

| SC2373 Size: 5



107 White/Black/White/(Volt)

NIKE STRIKE TEAM

Traditional 32-panel design that guarantees consistent performance.

- Machine-stitched for consistent play.
- Reinforced Rubber Bladder for enhanced shape retention.
- 2 Year stitch and shape guarantee.
- Material: 60% rubber/15% polyurethane/13% polyester/12% EVA.

Life cycle: 01 April 2015 - 31 March 2016

SC2678 Size: 3,4,5



103 White/Anthracite/(Green)

NIKE AG DURO

Constructed specifically for optimal performance and artificial grass.

- Hand-stitched PU casing for durability.
- 32-Panel geometry distributes pressure more evenly.
- Stain-resistant chasing.
- 2 Year stitch and shape guarantee.
- Material: 28% polyurethane/44% rubber/26% polyester/2% cotton.

Life cycle: 01 April 2015 - 31 March 2016

SC2370 Size: 3,4,5



117 White/White/(Black)



330 Green/Green/(Black)



775 Yellow/Yellow/(Purple)



880 Orange/Orange/(Black)

NIKE TEAM TRAINING

Proven performance due to the traditional 32-panel design.

- TPU casing for durability.
- Durable casing.
- Reinforced Rubber Bladder for enhanced shape retention.
- 2 Year stitch and shape guarantee.
- Material: 60% rubber/15% polyurethane/13% polyester/12% EVA.

Life cycle: 01 April 2015 - 31 March 2016

SC1911 Size: 3,4,5

BAGS

WATER-RESISTANT FABRIC
TO KEEP YOUR CLOTHES AND
GEAR DRY AND PROTECTED



MESH VENTING FOR BREATHABLE
WET/DRY STORAGE.



HARD CASE SHELL FOR
IMPROVED STABILITY.



Backview

WATER-RESISTANT FABRIC
TO KEEP YOUR CLOTHES AND
GEAR DRY AND PROTECTED



SEPARATE SIDE STORAGE
COMPARTMENTS WITH MESH
PANELS FOR BREATHABLE
WET/DRY STORAGE.



Backview

WATER-RESISTANT TARPAULIN BOTTOM
TO PROTECT AGAINST WET LOCKER ROOM
FLOORS AND WET GRASS.

NEW



010 Black/Black/(White)



410 Midnight Navy/Black/(White)



658 University Red/Black/(White)

NIKE CLUB TEAM SWOOSH HARDCASE

- A spacious bag with separate shoe compartment.
- Adjustable, padded shoulder strap.
 - Separated shoe compartment.
 - Removable molded tray allows easy cleaning.
 - Wet/dry separation.
 - Water-resistant Tarpaulin.
 - Fabric: 100% polyester.

Life cycle: 01 July 2015 - 31 March 2017

BA5196 - medium

Size: 47L x 37H x 31W/45L

BA5195 - large

Size: 52L x 40H x 31W/52L

BA5197 - extra large

Size: 55L x 42H x 36W/62L

NEW



010 Black/Black/(White)



410 Midnight Navy/Black/(White)



657 University Red/Black/(White)

NIKE CLUB TEAM SWOOSH DUFFEL

- A spacious bag for all your gear with separate shoe compartment and plenty of pockets.
- Water-resistant Tarpaulin bottom.
 - Carry as a backpack, duffel, or cross-body.
 - Separated shoe or wet/dry compartment.
 - Fabric: 100% polyester.

Life cycle: 01 July 2015 - 31 March 2017

BA5194 - small

Size: 40L x 23H x 27W/43L

BA5193 - medium

Size: 53L x 37H x 27W/52L

BA5192 - large

Size: 58L x 38H x 29W/58L

NEW

010 Black/Black/
(White)

NIKE CLUB TEAM SWOOSH ROLLER BAG 3.0

A spacious, multi-pocket bag with wheels to take the team's kits.

- Hand carrying loop.
- Handle grips.
- Zip pockets at side and front.
- Shoe compartment.
- Reinforced tarpaulin bottom.
- Fabric: 100% polyester.
- Size: 82L X 38H X 35W / 120L

Life cycle: 01 July 2015 - 31 March 2017

BA5199

NEW

010 Black/Black/
(White)

NIKE CLUB TEAM SWOOSH BALL BAG

Essential for any team and perfect for training and gameday.

- Holds up to 16 balls.
- Drawcord closure.
- Adjustable shoulder straps.
- Fabric: 100% polyester.
- Size: 86L X 47H X 47W / 164L

Life cycle: 01 July 2015 - 31 March 2017

BA5200

NEW

010 Black/Black/
(White)

NIKE CLUB TEAM SWOOSH BACKPACK - M

A backpack with enough space to carry everything you need.

- Water-resistant Tarpaulin bottom.
- Dual zippered main compartment.
- Separated shoe compartment.
- Multiple pockets for organization.
- Exterior side water-bottle pocket.
- Padded shoulder straps and padded back.
- Fabric: 100% polyester.

Life cycle: 01 July 2015 - 31 March 2017

BA5190 Size: M

071 Black/Black/
(Volt)100 White/Black/
(Black)

MERCURIAL LITE

Optimized for speed, engineered for comfort.

- Waffle pattern EVA Foam adds cushioning and airflow.
- Anatomic shaped K-Resin shell provides zero distraction performance and targeted protection for the player.
- Protection without slowing you down.
- Fabric: 70% K-Resin Shell/30% Eva Foam.

Life cycle: 01 April 2015 - 31 March 2016

SP0284 Size: XS S M L XL

069 Black/Red/
(Silver)162 White/Red/
(Black)

NIKE PROTEGGA SHIELD

The ultimate Protective Guard.

- Comes with a lightweight detachable Dri-FIT ankle guard for additional protection.
- Adjustment strapping system offers a secure and customised fit.
- Ventilated high density shell provides protection and airflow.
- Fabric: 45% polypropylene/23% polyester/9% nylon.

Life cycle: 01 April 2015 - 31 March 2016

SP0255 Size: XS S M L XL

NEW



010 Black/Black/(White)

NIKE CLUB TEAM SWOOSH TOILETRY BAG

Essential for your accessories.

- Water resistant bottom.
- Hand carrying loop.
- Fabric: 100% polyester.
- Size: 27L X 16H X 16W / 6L

Life cycle: 01 July 2015 - 31 March 2017

BA5198

001 Black/
White101 White/
Black401 Navy/
(White)498 Varsity Royal/
(White)610 University Red/
(White)

GUARD STAY II

Keep your shinguards in place.

- Wear them below or at the base of your shinguards to prevent them from slipping.
- Velcro brand fastener strap.
- Set of 2 per package.
- Fabric: 43% polyester/30% nylon/27% rubber.

Life cycle: 01 April 2015 - 31 March 2016

SE0047 One size fits all

001
Black/Black/(White)

HYPERWARM FIELD PLAYER'S GLOVE

Built for breathable protection and exceptional performance, the Nike Lightweight Player's Gloves feature specialized grip zones for control and comfort.

- Dri-fit fabric to wick sweat away and help keep you dry and comfortable.
- Silicone grip zones provide enhanced grip for throw-ins.
- Fabric: 100% polyester.

Life cycle: 01 April 2015 - 31 March 2016

GS0261 Size: S M L XL

067 Black/Black/
(White)

NIKE PARK SHIELD

Designed to offer strategic protection for shins with a ventilated design for comfort.

- Ventilated, high-density shell for comfort and durable protection.
- Attached ankle guard for additional protection.
- Front-fastening top strap for secure, adjustable fit.
- Fabric: 52% polypropylene/22% polyester/19% EVA/7% other.

Life cycle: 01 April 2015 - 31 March 2016

SP0252 Size: XS S M L XL

067 Black/Black/
(White)

NIKE PARK GUARD

Designed to offer strategic protection for shins with a ventilated design for comfort.

- Ventilated, high-density shell for comfort and durable protection.
- Ventilated Foam Backing for a cool comfort.
- Dual-Straps for a secure fit that is easy to adjust.
- Fabric: 70% polypropylene/20% EVA/5% nylon/5% other.

Life cycle: 01 April 2015 - 31 March 2016

SP0253 Size: XS S M L XL

SIZE CHART

APPAREL

Men's (metric)							
Size (cm)		S	M	L	XL	XXL	XXXL
Chest		88-96	96-104	104-112	112-124	124-136	136-148
Waist		73-81	81-89	89-97	97-109	109-121	121-133
Hip		88-96	96-104	104-112	112-120	120-128	128-136
Regular Inseam		82.5	83	83.5	84	84.5	85
Short Inseam		77.5	78	78.5	79	79.5	80
Long Inseam		87.5	88	88.5	89	89.5	90
Women's (metric)							
Size (cm)		S	M	L	XL		
Bust		83-90	90-97	97-104	104-114		
Waist		67-74	74-81	81-88	88-98		
Hip		91-98	98-105	105-112	112-120		
Regular Inseam		79.5	80		80.5		
Short Inseam		74.5	75		75.5		
Long Inseam		84.5	85		85.5		
Kids' (metric)							
Size (cm)	XS	S	M	L	XL		
Chest	64.5-66	66-69	69-75	75-81.5	81.5-88.5		
Waist	59.5-61.5	61.5-65	65-69	69-72.5	72.5-75.5		
Hip	68.5-71	71-74.5	74.5-79.5	79.5-84.5	84.5-89.5		
EMEA Height	122-128	128-137	137-147	147-158	158-170		

SOCKS

Men's & Women's (unisex)											
Size	XS	S	M	L	XL						
Europe Shoe	30-34	34-38	38-42	42-46	46-50						
UK Shoe	12-2	2-5	5.5-7.5	8-11	11-14.5						
Men's US Shoe	13C-3Y	3Y-5Y	6-8	8-12	12-15						
Women's US Shoe		4-6	6-10	10-13							
cm	19-21	21-24	24-27	27-30	30-33						

FOOTWEAR

Men's																													
EU	38.5	39	40	40.5	41	42	42.5	43	44	44.5	45	45.5	46	47	47.5	48	48.5	49	49.5	50	50.5	51	51.5	52	52.5	53.5	54.5	55.5	56.5
US	6	6.5	7	7.5	8	8.5	9	9.5	10	10.5	11	11.5	12	12.5	13	13.5	14	14.5	15	15.5	16	16.5	17	17.5	18	19	20	21	22
UK	5.5	6	6	6.5	7	7.5	8	8.5	9	9.5	10	10.5	11	11.5	12	12.5	13	13.5	14	14.5	15	15.5	16	16.5	17	18	19	20	21
CM	24	24.5	25	25.5	26	26.5	27	27.5	28	28.5	29	29.5	30	30.5	31	31.5	32	32.5	33	33.5	34	34.5	35	35.5	36	37	38	39	40
Women's																													
EU	34.5	35	35.5	36	36.5	37.5	38	38.5	39	40	40.5	41	42	42.5	43	44	44.5	45	45.5	46	47	47.5	48	48.5	49				
US	4	4.5	5	5.5	6	6.5	7	7.5	8	8.5	9	9.5	10	10.5	11	11.5	12	12.5	13	13.5	14	14.5	15	15.5	16				
UK	1.5	2	2.5	3	3.5	4	4.5	5	5.5	6	6.5	7	7.5	8	8.5	9	9.5	10	10.5	11	11.5	12	12.5	13	13.5				
CM	21	21.5	22	22.5	23	23.5	24	24.5	25	25.5	26	26.5	27	27.5	28	28.5	29	29.5	30	30.5	31	31.5	32	32.5	33				
Youth																													
EU	27.5	28	28.5	29.5	30	31	31.5	32	33	33.5	34	35	35.5	36	36.5	37.5	38	38.5	39	40									
US	10.5C	11C	11.5C	12C	12.5C	13C	13.5C	1Y	1.5Y	2Y	2.5Y	3Y	3.5Y	4Y	4.5Y	5Y	5.5Y	6Y	6.5Y	7Y									
UK	10	10.5	11	11.5	12	12.5	13	13.5	1	1.5	2	2.5	3	3.5	4	4.5	5	5.5	6	6									
CM	16.5	17	17.5	18	18.5	19	19.5	20	20.5	21	21.5	22	22.5	23	23.5	23.5	24	24	24.5	25									

NIKE FIT SYSTEM



DRI-FIT
STAY COOL

DRI-FIT: Pulls away sweat to help keep you dry and comfortable.

DRI-FIT SPHERE: 3-D construction helps keep you dry and reduces cling from sweat.



STORM-FIT
STAY DRY

STORM-FIT 1: Helps keep you dry and comfortable in moderate weather conditions.

STORM-FIT 5, 10 & 20: Helps keep you comfortable and dry in rain, sleet and snow.

The seam-sealed, breathable fabric completely blocks wind and rain penetration at:

STORM-FIT 5: up to 5,000 mm of water pressure

STORM-FIT 10: up to 10,000 mm of water pressure

STORM-FIT 20: up to 20,000 mm of water pressure

WASH INSTRUCTIONS

CARE INSTRUCTIONS FOR NIKE TEAM SPORTS APPAREL PRODUCT

Care for jerseys promptly. The sooner you pre-treat and launder the stained clothes, the better your results will be. Don't allow mud or stains to set. Do not leave wet or dirty jerseys in football or gym bags, where smells and permanent stains can develop.

If a stain is not removed in washing:

1. Do not dry it. Dryer heat will set the stain.
2. Soak the stain in a pre-wash. In the case of severe staining it may be necessary to apply a stain remover directly to the affected area. Then launder again.
3. Do not dry a garment until the stain is removed because dryer heat will set the stain.

Once stain is removed launder as per usual custom.

CARE DEFINITIONS

Pre-treat heavily soiled spots. Apply undiluted laundry detergent with a bleach alternative.

Pre-soak heavy stains. Soak stained items in a plastic bucket or laundry tub with the warmest water safe for the fabric and a good laundry detergent for one to three hours. Sensitive stains should be rinsed in cold water, and then washed with a non-chlorine bleach product.

Pre-wash: Used for heavily soiled garments. Run through the pre-wash cycle with the recommended amount of detergent. When wash cycle is complete, drain the pre-wash solution and launder in the hottest water recommended by the manufacturer.

Please check the washing instructions on the garment.

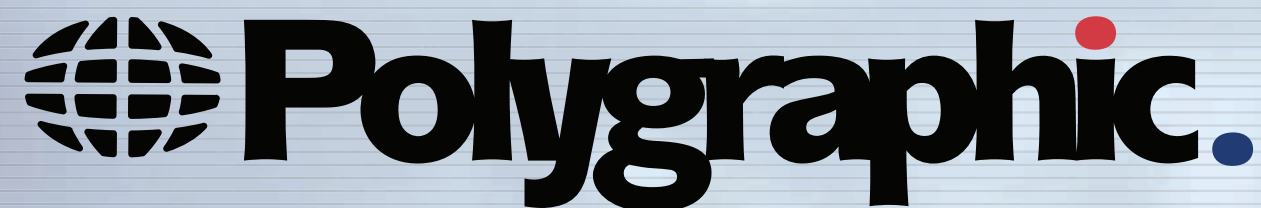
DISCLAIMER

This Nike Team Football catalogue has been created to offer a comprehensive view of products available for sale to teams. Whilst the information provided in this catalogue has been gathered and assembled with every effort made to ensure the accuracy of the content, Nike does not make any warranty in respect of this information.

Nike reserves the right to change items in the product line or their individual specification at any time.

NAMES & NUMBERS

ID: RONALDO



NEW STYLE NIKE TEAM NAMES, NUMBERS & LETTERS

Personalise your Nike teamwear now with the official
licensed player names and numbers.

TO ORDER: CONTACT YOUR LOCAL RETAILER

Available sizes and colours:

White, Black, Red & Royal Blue

10 cm for shorts or front of shirts
23 & 25 cm for back of playing shirts

Letters 5 cm for nameblocks

1 2 3 4 5 6 7 8 9 0

Exclusively licensed by

www.polygraphic.com

